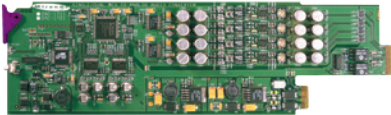
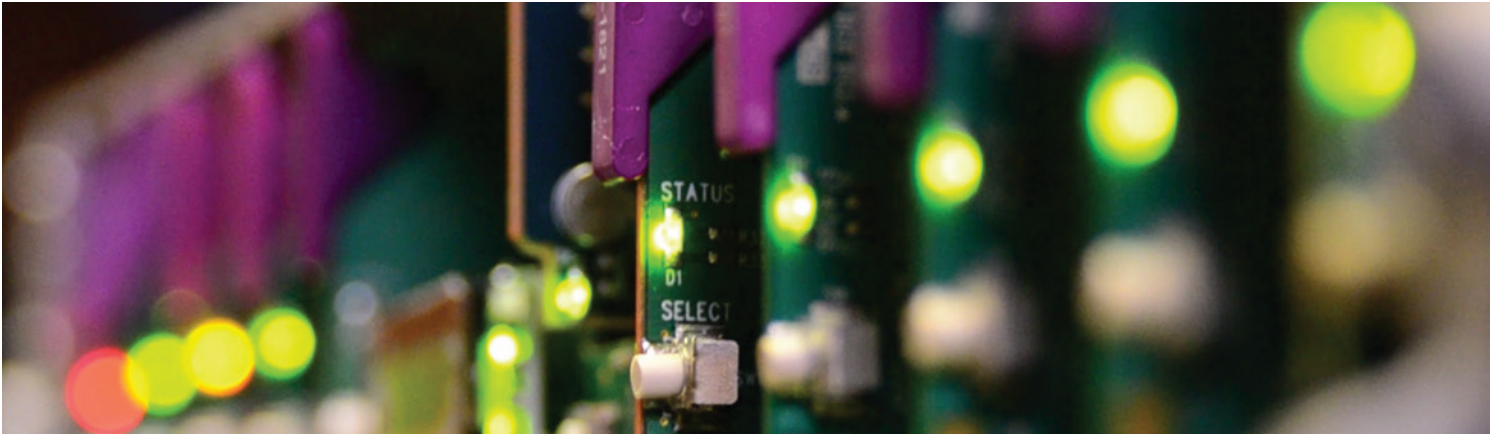


DAC-1721

Dual AES to Analog Audio Converter

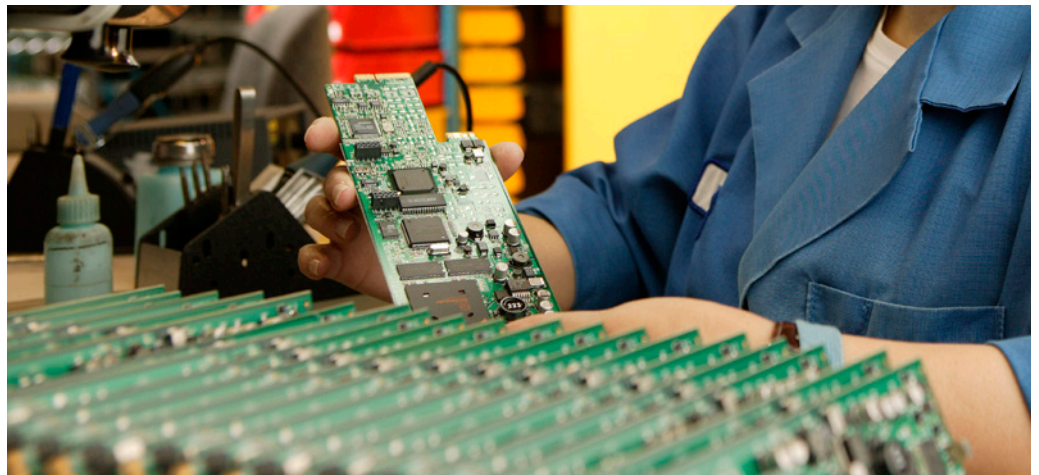


Space-saving, modular platform for advanced signal processing.

The DAC-1721 from Grass Valley, a Belden Brand, is high-quality, 24-bit, digital to analog audio converter which allows conversion of two AES digital signal into to two stereo analog audio signals.

The DAC-1721 is a dual input converter card. The input sampling rates can be up to 100 kHz, including 32 kHz, 44.1 kHz, 48 kHz and 96 kHz. An internal digital EBU tone generator facilitates alignment of audio levels. All analog audio output levels may be set individually. A digital 50/15 μ s de-emphasis stage may be selected manually or automatically according to the channel status. Input status is also available indicating input audio signal presence or overload.

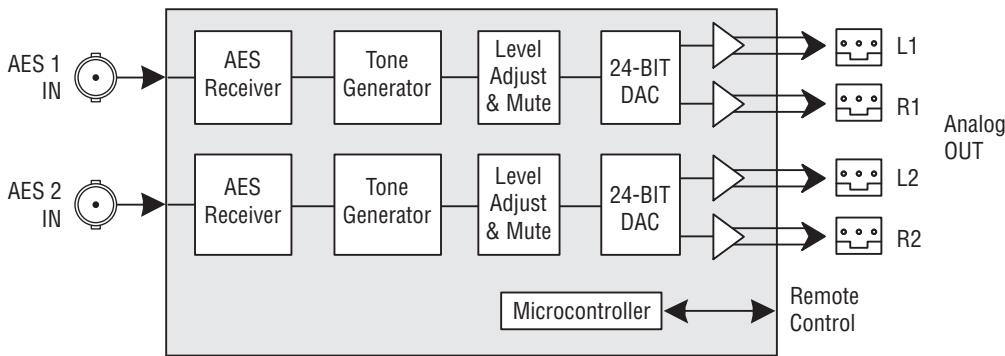
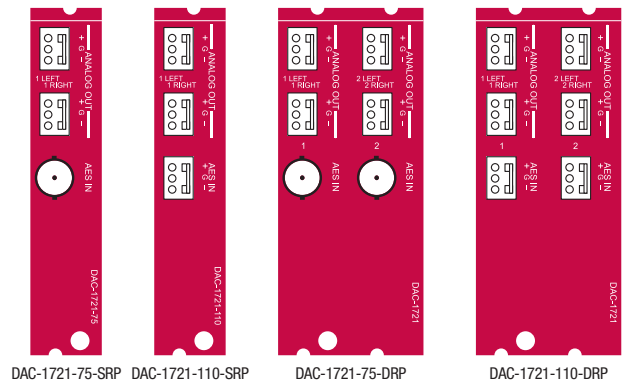
The DAC-1721 is compatible with both AES3 and AES-3id digital audio standards.



DAC-1721 Dual AES to Analog Audio Converter

KEY FEATURES

- Single or dual AES3, AES-3id or S/PDIF digital input(s)
- Single or dual stereo analog audio outputs
- 0 dBFS programmable analog (+15, 16, 18, 20, 21, 22, 24 and 28 dBu) level mapping
- 24-bit D/A conversion
- 32 to 96 kHz sampling rates
- -96 to +12 dB level adjustment (by 0.5 dB steps) per channel
- Adjustable presence and overload threshold
- Internal EBU tone generator
- Digital 50/15 μ s de-emphasis selectable



DAC-1721 Functional Block Diagram

SPECIFICATIONS

Input

Signal: AES3
Level: 0.2 to 7 Vp-p
Termination: 110 Ω balanced
Return loss: >15 dB up to 12 MHz
 AES-3id (S/PDIF compatible)
Signal: AES-3id (SMPTE 276M)
Level: 0.2 to 5.0 Vp-p
Termination: 75 Ω unbalanced
Return loss: >15 dB up to 12 MHz

Outputs (2)

Signal: Balanced analog audio
Impedance: <50 Ω
Maximum level: 24 dBu / 600 ohm

Processing Performance

Quantization: 24 bits
Sampling:
 20 to 50 kHz (128X over-sampling)
 50 to 100 kHz (64X over-sampling)
0 dBfs: +15, 16, 18, 20, 21, 22, 24 and 28 dBu
SNR: >116 dB (A weighted)
Distortion: <-96 dB
Crosstalk: <-100 dB (20 Hz to 20 kHz)
Freq. response: \pm 0.2 dB (20 Hz to 20 kHz)
De-emphasis: \pm 0.3 dB (50/15 μ s)
Latency: 32/FS (670 μ s at 48 kHz)
Tone generator: 1 kHz sine wave interrupted on left channel (250 ms / 3s)

Electrical

Power: 4.3W

ORDERING

Densité 2 frame	Densité 3 frame	Description
DAC-1721	DAC-1721-3RU	Dual AES to analog audio converter
DAC-1721-75-SRP	DAC-1721-75-SRP-3RU	Single rear connector panel, 75 ohm
DAC-1721-110-SRP	DAC-1721-110-SRP-3RU	Single rear connector panel, 110 ohm
DAC-1721-75-DRP	DAC-1721-75-DRP-3RU	Double rear connector panel, 75 ohm
DAC-1721-110-DRP	DAC-1721-110-DRP-3RU	Double rear connector panel, 110 ohm

Remote control iControl, iControl Solo, RCP-200



WWW.GRASSVALLEY.COM

Join the Conversation at **GrassValleyLive** on Facebook, Twitter, YouTube and **Grass Valley - A Belden Brand** on LinkedIn.



Belden, Belden Sending All The Right Signals and the Belden logo are trademarks or registered trademarks of Belden Inc. or its affiliated companies in the United States and other jurisdictions. Grass Valley, Densité and iControl are trademarks or registered trademarks of Grass Valley, Belden Inc., Grass Valley and other parties may also have trademark rights in other terms used herein.

Copyright © 2014 Grass Valley. All rights reserved. Specifications subject to change without notice.

GVB-1-0352A-EN-DS